

## GW316-CLF Large Flange Closed End Threaded Insert

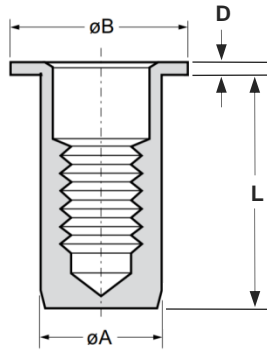
Stainless steel 316 · Large flange · Round · Closed end  
M4 - M12

### Features

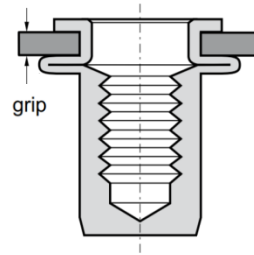
- Designed to provide load bearing threads in thin sheet materials
- Large flange head provides a load bearing surface and reinforces the hole to prevent push-out
- Closed end prevents the ingress of dirt and fluids into thread and electrical circuits
- Extra high corrosion resistance

### Material

- Stainless steel 316



Before Placement



After Placement

Part No.	Thread Size	Grip Range		Hole Size	øA	øB	D	L
		min.	max.					
GW316-CLFM4-0520	M4	0.5	2.0	6.0	6.0	9.0	1.0	15.0
GW316-CLFM4-2035		2.0	3.5					16.5
GW316-CLFM5-0530	M5	0.5	3.0	7.0	7.0	10.0	1.0	17.5
GW316-CLFM5-3050		3.0	5.0					19.5
GW316-CLFM6-0530	M6	0.5	3.0	9.0	9.0	12.0	1.5	21.5
GW316-CLFM6-3050		3.0	5.0					23.5
GW316-CLFM8-0530	M8	0.5	3.0	11.0	11.0	15.0	1.5	23.5
GW316-CLFM8-3055		3.0	5.5					26.0
GW316-CLFM10-0835	M10	0.8	3.5	13.0	13.0	17.0	1.5	28.5
GW316-CLFM10-3560		3.5	6.0					31.0
GW316-CLFM12-3070	M12	3.0	7.0	16.0	16.0	23.0	2.0	38.0

Thread Size	Max. torque	Pull-out	Torque-to-turn	Shear strength
	Nm max.	Kn	Nm	kN
M4	~7.1	> ~11.0	~2.6	~3.5
M5	> ~16.0	> ~14.5	~3.0	~4.8
M6	> ~22.0	> ~27.0	~6.8	~7.3
M8	> ~70.0	> ~40.0	~9.0	~9.0
M10	> ~70.0	> ~43.0	~13.0	~8.4
M12	> ~130.0	> ~70.0	~25.0	~14.0